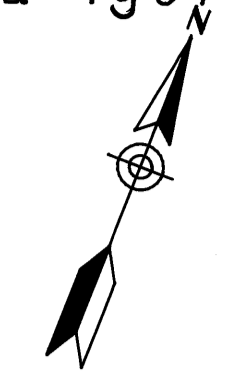


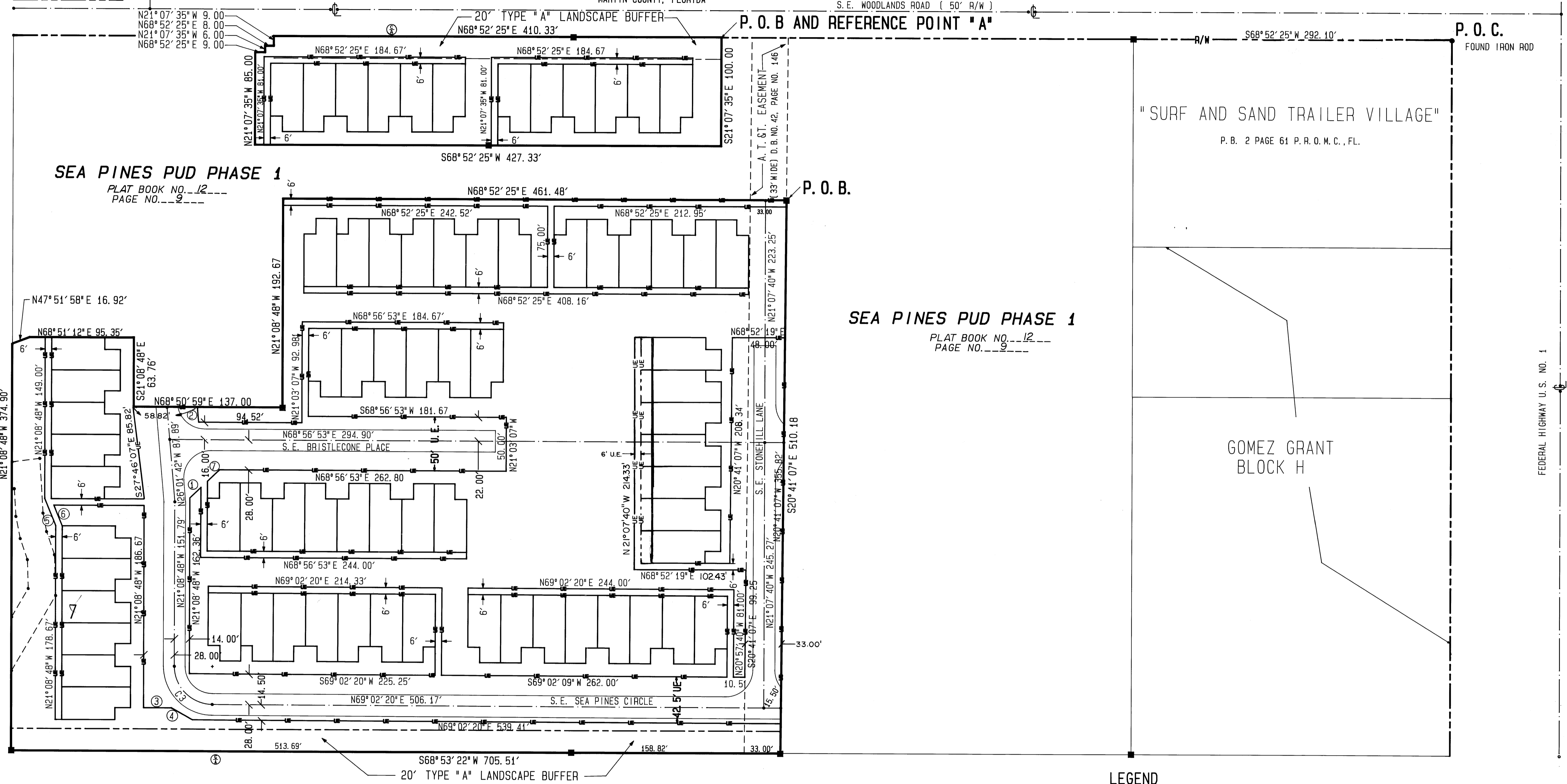
# A PLAT OF SEA PINES PUD PHASES 2-3-4

EVERGREEN PARK SUBDIVISION  
D.R. BOOK 81 PAGE 425

LYING IN THE UNPLATTED PORTION OF GOMEZ GRANT,  
BEING A PORTION OF BLOCK "H" OF AN UNRECORDED  
PLAT OF LOTS "A" THRU "N" AT THE GOMEZ GRANT  
MARTIN COUNTY, FLORIDA



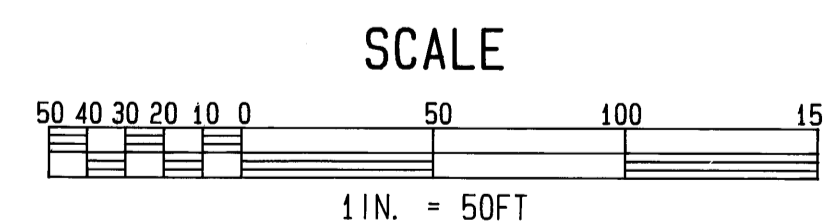
- ① N25°00'00"E 14.00'
- ② N26°01'42"W 13.90'
- ③ N68°51'12"E 25.38'
- ④ N82°04'52"W 22.42'
- ⑤ N43°20'08"W 27.00'
- ⑥ N43°20'08"W 20.50'
- ⑦ N25°00'00"E 15.28'



**SEA PINES PUD PHASE 1**  
PLAT BOOK NO. 12  
PAGE NO. 9

**SEA PINES PUD PHASE 1**  
PLAT BOOK NO. 12  
PAGE NO. 9

LAKESIDE VILLAGE MOBIL HOME PK. (UNREC)  
GOMEZ GRANT BLOCK "G"



Curve	Radius	Delta	Length	Tangent	Chord/Brg
C3	35.00'	89°48'52"	54.86'	34.89'	49.42' S66-03-14.2E

**LEGEND**

- PERMANENT REFERENCE MARKER
- PERMANENT CONTROL POINT
- INDICATES POINT OF BEGINNING
- INDICATES POINT OF CONTROL
- ⊕ CONTROL OF ACCESS
- UTILITY EASEMENT
- - - LANDSCAPE BUFFER
- - - UPLAND NATIVE VEGETATION PRESERVATION AREA BOUNDARY (U. N. V. P. AREA)

**Keith & Schnars, Inc.**  
ENGINEERS - PLANNERS - SURVEYORS

141 S.W. FLAGLER AVENUE  
STUART, FLORIDA 34994  
(407) 287-2626  
PAGE 3 OF 4

SEA PINES  
UTILITY EASEMENTS &  
LANDSCAPE BUFFERS



STUART  
DIVISION

AUGUST, 1990

844